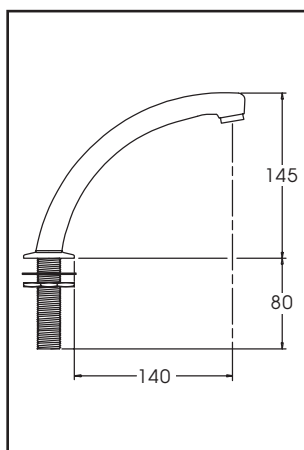


Description

Basin spouts are designed to be used in conjunction with electronic no-touch control systems, and push button or knee operated timed flow valves. Three models of basin spouts are available, for deck or surface mounting and wall mounting. All models have a chrome plated finish and a 12 mm (½ in) BSP male inlet connection.

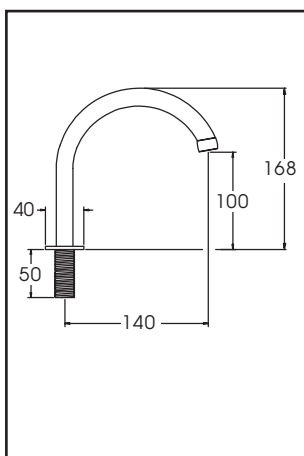
Product Range



Deck Mounted Basin Spout

Product Code

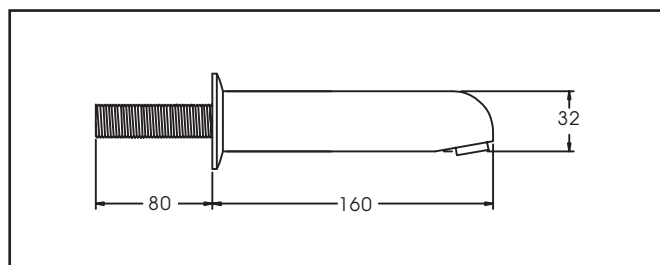
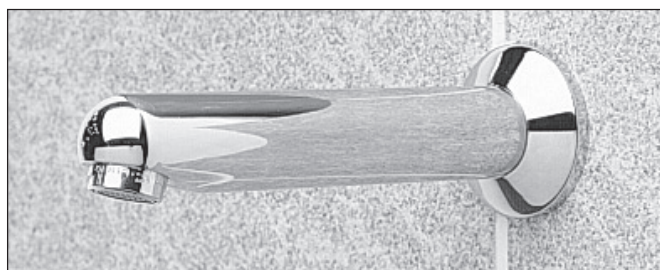
□6912DSP-deck mounted basin spout



Deck Mounted Basin Spout

Product Code

□6924DSP-deck mounted basin spout



Wall Mounted Basin Spout

Product Code

□6932WSP-wall mounted basin spout

